

EVERY SUMMER HAS A STORY



SUMMER DAY CAMP

YMCA OF GREATER WAUKESHA COUNTY

INDEX

CAMP OVERVIEW	3
Camp Hours.....	3
What to Bring	3
Camp Safety.....	3
2021 CAMP PLANNER	4-5
CAMP OFFERINGS	6-18
Summer Day Camp.....	6-7
Camp Double Eagle.....	8-9
Specialty Camps	10-11
Elmbrook STEAM Camp.....	12-13
New Berlin Arts Camp	14-15
Summer School Wrap Camps	16-17
Kinder Camp.....	18
CAMP SWIM LESSONS	18
MEMBERSHIP	19
ATTENDANCE & PRICING	20
PAYMENT INFORMATION	21
Policies	21
Financial Assistance	21
Wisconsin Shares Child Care Assistance.....	21
Payment Calendar.....	21
REGISTRATION	22
CAMP LOCATIONS	23
CAMP OPEN HOUSES	BACK COVER

2021 SUMMER DAY CAMP SPONSOR

Wisconsin Vision

SEE. MORE. LIFE.

WELCOME TO SUMMER DAY CAMP

Summer Day Camp at the Y is more than looking after kids. It's about nurturing their development by providing a safe place to learn fundamental skills, build self-reliance, and establish healthy, trusting relationships. But most of all, Summer Day Camp at the Y offers an experience that is always so much fun!



ABOUT US

The YMCA of Greater Waukesha County has planned an exciting variety of Summer Day Camp programs conveniently located at 14 different sites throughout our service area. Our programs at the Y offer something for every child. Parents will have peace of mind knowing their children are in a safe and enriching environment with activities led by trained staff.



REGISTRATION

Our Summer Day Camp is an 11-week program that runs June 14–August 27, 2021. Families can sign up for one or more weeks. Registration opens February 1, 2021.



CAMP HOURS

OFFICIAL CAMP DAY 9:00 AM – 4:00 PM

DROP OFF TIMES 7:00–9:00 AM

PICK UP TIMES 4:00–6:00 PM

LATE DROP OFF & EARLY PICK UP

For late drop off (after 9 AM) or early pick up (before 4 PM), please inform your Summer Day Camp office the day prior. Specific drop off and pick up locations for your camp can be found on our website. **Late drop off and early pick up is not available on field trip days.**

CAMP DOUBLE EAGLE & SUMMER SCHOOL WRAP CAMPS HAVE SPECIAL HOURS

See pages 8–9 for Camp Double Eagle details and pages 16–17 for Wrap Camps.



WHAT TO BRING

At Summer Day Camp, campers spend most of the day outdoors. Be sure to send your child to camp wearing appropriate clothing and footwear. Sunscreen should be applied before camp and also brought to camp. Please label your child's sunscreen.

To help your child take full advantage of all that we have to offer, please leave items of monetary or sentimental value at home, including personal toys, electronic equipment (cell phones, Nintendo DS, other gaming devices, etc.), and trading or game cards.

Please send the following items with your camper everyday:



- Non-Perishable Lunch
- Water Bottle
- Tennis Shoes or Closed-Toe Shoes
- Swimsuit & Towel
- Sunscreen & Bug Spray



CAMP SAFETY

The YMCA of Greater Waukesha County takes the health and safety of each camper seriously. We will monitor CDC and other local and state agencies' recommendations to make sure we are implementing protocols to keep campers healthy to the best of our ability. We will keep families apprised of our current protocols as we get closer to the start of Summer Day Camp.

2021 CAMP PLANNER

		WEEK 1 JUNE 14-18	WEEK 2 JUNE 21-25	WEEK 3 JUNE 28-JULY 2	WEEK 4 JULY 5-9
CAMP DOUBLE EAGLE	CAMP DOUBLE EAGLE Ages 7-13	✓	✓	✓	✓
MUKWONAGO Y	SUMMER DAY CAMP Ages 4-6	✓	✓	✓	✓
POPLAR CREEK ELEMENTARY	ARTS CAMP Ages 5-13				
SOUTHWEST Y	SUMMER DAY CAMP Ages 4-13	✓	✓	✓	✓
	SPECIALTY CAMP Ages 7-13		ARCHERY*	GOING GREEN	WIZARDLY WORLD
SWANSON ELEMENTARY	ELMBROOK STEAM CAMP Ages 5-13	DIG IN	RAINBOW ROAD	CIRCUIT CIRCUS	UNDERGROUND EXPLORERS
TRI COUNTY Y	SUMMER DAY CAMP Ages 4-13	✓	✓	✓	✓
	SPECIALTY CAMP Ages 7-13	SECRET AGENT CAMP	MASTER BUILDERS	ARCHERY*	STROKE OF GENIUS
WAUKESHA Y	SUMMER DAY CAMP Ages 5-13	✓	✓	✓	✓
	SPECIALTY CAMP Ages 7-13		FITNESS FRENZY		
WEST SUBURBAN Y	SUMMER DAY CAMP Ages 4-13	✓	✓	✓	✓
	SPECIALTY CAMP Ages 7-13		STROKE OF GENIUS		FITNESS FRENZY
Y ACADEMY	SUMMER DAY CAMP Ages 4-6	✓	✓	✓	✓
EAST TROY	SCHOOL WRAP CAMP Ages 5-13		✓	✓	✓
ELMBROOK	SCHOOL WRAP CAMP Ages 5-13		✓	✓	✓
MUKWONAGO	SCHOOL WRAP CAMP Ages 5-13		✓	✓	✓
NEW BERLIN	SCHOOL WRAP CAMP Ages 5-13		✓	✓	✓

WEEK 5
JULY 12-16

WEEK 6
JULY 19-23

WEEK 7
JULY 26-30

WEEK 8
AUGUST 2-6

WEEK 9
AUGUST 9-13

WEEK 10
AUGUST 16-20

WEEK 11
AUGUST 23-27

✓	✓	✓	✓	✓	✓	✓
✓	✓	✓	✓	✓	✓	✓
		CHOREOGRAPHED CONSTRUCTION	STUDENT'S STUDIO	IMAGINATION EXPLORATION	CAMP'S GOT TALENT	
✓	✓	✓	✓	✓	✓	✓
MASTER BUILDERS	ZOOLOGY	NINJA WARRIORS	ARCHERY*	SECRET AGENT CAMP	FORCE CAMP	
SENSATIONAL SAFARI	SUPER SENSES	SUSTAINABLE SUMMER	MYSTICAL MESSES	OUT OF THIS WORLD	MAKE A SPLASH	
✓	✓	✓	✓	✓	✓	✓
OUTDOOR SURVIVAL*	ZOOLOGY	NINJA WARRIORS	WIZARDLY WORLD	SURVIVOR	FORCE CAMP	
✓	✓	✓	✓	✓	✓	✓
MASTER BUILDERS		STROKE OF GENIUS		FORCE CAMP		
✓	✓	✓	✓	✓	✓	✓
	MASTER BUILDERS		WIZARDLY WORLD		SECRET AGENT CAMP	
✓	✓	✓	✓	✓	✓	✓

✓	
✓	✓
✓	
✓	✓

*AGES 8 & OLDER

SUMMER DAY CAMP

AGES 4-13



LOCATIONS

AGES 4-6

Mukwonago YMCA
Y Academy

AGES 4-13

Southwest YMCA
Tri County YMCA
West Suburban YMCA

AGES 5-13

Waukesha YMCA



DETAILS

DATES

Weeks 1-11 (June 14 - August 27)

DAYS & TIMES

Monday - Friday
7:00 AM - 6:00 PM

FULL WEEK PRICE

AGE 4

Member: \$204
Program Participant: \$234

AGES 5-13

Member: \$194
Program Participant: \$224

3-DAY PRICE

AGES 5-13

Member: \$140
Program Participant: \$160

BEST SUMMER EVER

Summer Day Camp at the Y offers children positive developmental experiences and encourages them to forge bonds with one another and with staff, building confidence through skill-building activities suited to their age. Children experience a sense of achievement through opportunities in the outdoors and are welcomed to a physically and emotionally safe and stimulating environment.

At Summer Day Camp, children experience new things, develop new skills, and most importantly, have fun! While participating in unique experiences and adventures, they build self-esteem, develop interpersonal skills, and make lasting friendships and memories. We take pride in creating an exciting, safe environment that will give your child an unforgettable summer.

We believe that an organized camp experience is a vital component in the development and education of the whole child. Throughout the summer, we feature different themes filled with new activities, experiences, and memories. Children develop strong relationships while enjoying activities like swimming, crafts, physical activity, and more. Whether it's playing a new recreational activity, learning about science and nature, or exploring their creativity, your child will build confidence and develop friendships that last a lifetime.

“ Don't you know that everybody's got a Fairyland of their own? ”

P.L. TRAVERS Mary Poppins

A TYPICAL WEEK OF CAMP INCLUDES:

- Camper's choice and play during early morning and late afternoon hours.
- Skill building related to STEM, arts and humanities, and outdoor recreation.
- Start and end a camp day with a group assembly filled with song, dance, and recognition to celebrate the spirit of camp.
- Character development with a focus on our core values: Honesty, Caring, Respect, and Responsibility.
- A variety of off-site field trips or on-site special activities and guest speakers (vary per week, per camp site).



SAMPLE SCHEDULE

7:00–9:00 AM
Drop Off & Camper's Choice

9:00–9:30 AM
Opening Ceremony

9:30–9:45 AM
Fitness Fun

9:45–11:45 AM
Camp Activities

11:45 AM – 12:15 PM
Lunch

12:15–1:00 PM
Camp Activities

1:00–3:00 PM
Swimming & Camp Activities

3:00–3:30 PM
Camp Clean Up & Snack

3:30–4:00 PM
Closing Ceremony

4:00–6:00 PM
Pick Up & Camper's Choice

CAMP DOUBLE EAGLE

AGES 7-13



LOCATION

Camp Double Eagle
W365 S8661 Hwy 67
Eagle, WI 53119



DETAILS

DATES

Weeks 1-11 (June 14 - August 27)

DAYS & TIMES

Monday - Friday
7:00 AM - 6:00 PM

FULL WEEK PRICE

Member: \$204
Program Participant: \$234

EXPLORE THE OUTDOORS

Outdoor adventure awaits at Camp Double Eagle, located on more than 30 acres in the southern unit of beautiful Kettle Moraine State Forest. Amenities include an outdoor swimming pool, basketball court, archery range, craft lodge, and an open-air shelter. Campers will hike to explore nature as a part of their outdoor adventure. Throughout the summer, campers will experience hands-on learning about nature, science, art, and outdoor skills.



“ When you see someone putting on his big boots, you can be pretty sure an adventure is going to happen. ”

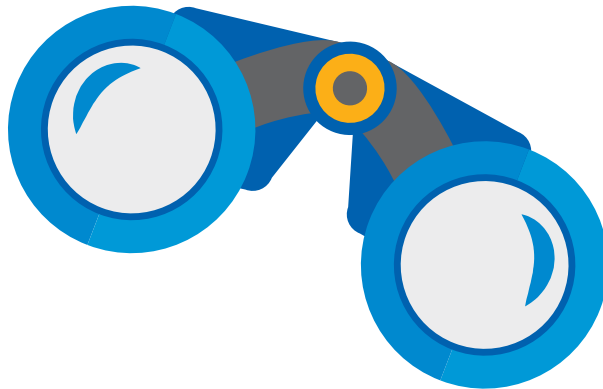
A.A. MILNE Winnie-the-Pooh

TRANSPORTATION



The Camp Double Eagle buses depart from the Waukesha and Mukwonago YMCAs no later than 8:35 AM. Campers must be signed in and ready to board the bus no later than 8:25 AM. The buses will return to the Waukesha and Mukwonago YMCAs between 4:15-4:30 PM. Early drop off (7:00-9:00 AM) and late pick up (4:00-6:00 PM) is only offered at the Waukesha and Mukwonago YMCAs for Camp Double Eagle.

Campers arriving late for Camp Double Eagle are required to provide their own transportation and cannot be enrolled in another camp for the day.



SAMPLE SCHEDULE

- 8:20-9:00 AM**
Board bus from Mukwonago or Waukesha YMCA
- 9:00-9:30 AM**
Opening Ceremony
- 9:30-10:00 AM**
Small Group Activities & Snack
- 10:00-11:30 AM**
Camp Activities
- 11:30 AM - 12:00 PM**
Camper's Choice
- 12:00-12:30 PM**
Lunch
- 12:30-1:30 PM**
Quiet Time Activities
- 1:30-3:00 PM**
Camp Activities
- 3:00-3:30 PM**
Closing Ceremonies
- 3:30-4:00 PM**
Board bus to Mukwonago or Waukesha YMCA

SPECIALTY CAMPS

AGES 7-13



LOCATIONS

Southwest YMCA
Tri County YMCA
Waukesha YMCA
West Suburban YMCA



DETAILS

DATES

Weekly offerings vary by branch.
See pages 4-5 for available dates.

DAYS & TIMES

Monday - Friday
7:00 AM - 6:00 PM

FULL WEEK PRICE

Member: \$229
Program Participant: \$259

DISCOVER NEW SKILLS

Camp is our specialty! From dance to design and archery to building, campers can discover something new or dive into one of their favorite subjects all summer long.

SPECIALTY CAMP THEMES

ARCHERY*

Ready, aim, shoot! Campers will learn the fundamentals of archery, including safety, while gaining confidence and building character.

FITNESS FRENZY

Have fun while getting fit! Our fitness instructors and camp counselors will lead campers in a wide variety of fun exercise classes, activities, and recreational games that will keep them active and moving.

FORCE CAMP

The Force is strong this week! Campers will begin the week as apprentices who are preparing to begin their training. Throughout the week, campers are challenged through daily galactic activities, training missions, and eventually graduate to become a true master.

GOING GREEN

Take advantage of our outdoor classroom to become responsible and caring citizens of our planet! Campers will learn about environmental education and enjoy nature-based experiences like forest exploration, art, conservation, gardening, farming, ecology, and sustainability.

MASTER BUILDERS

For campers who love to build with Lego bricks, Master Builders takes design concepts and applies them in fun and creative ways. Campers will spend their days participating in group builds and free brick play.

*AGES 8 & OLDER

“ You have brains in your head. You have feet in your shoes.
You can steer yourself in any direction you choose. ”

DR. SEUSS Oh, the Places You'll Go!

NINJA WARRIORS

Campers' strength, flexibility, and agility will be tested as we turn into true ninja warriors. Join us for obstacle courses, games, and workouts that teach campers how to live an active and healthy lifestyle.

OUTDOOR SURVIVAL*

Can our campers survive in the wild with just the supplies in their backpacks? After a week with us they will! Campers will learn survival skills including making a fire, building emergency shelters, and identifying wild plants. Campers will also learn new skills such as hiking and navigation. This camp includes additional field trips.

SECRET AGENT CAMP

Get ready for a harrowing spy adventure! Agents in training must follow clues and connect the dots before it's too late! Campers must work together to crack codes, travel stealthily, and catch villains.

STROKE OF GENIUS

Stroke of Genius campers will get creative with their hands and imagination! Each day, campers will focus on different art mediums. All masterpieces will be sent home at the end of the week.

SURVIVOR

We'll split our camp into tribes and compete in a Survivor-like competition! Campers will work as a team to conquer obstacle courses, relay races, puzzles, and team-building exercises. Teams that earn the most points throughout the day will be recognized at the tribal council meeting.

WIZARDLY WORLD

Experience a week-long journey filled with magic! Campers will have the opportunity to express their love for the wizarding world through a house sorting ceremony, games of quidditch, and a hunt for the Sorcerer's Stone!

ZOOLOGY

Get wild about learning! Campers will learn about the amazing animal kingdom this week. We'll talk about animal characteristics, interactions, and environments, as well as the structure and functions of specific body types.

ELMBROOK STEAM CAMP

AGES 5-13



LOCATION

Swanson Elementary
305 N Calhoun Road
Brookfield, WI 53005



DETAILS

DATES

Weeks 1-10 (June 14 - August 20)

DAYS & TIMES

Monday - Friday
7:00 AM - 6:00 PM

FULL WEEK PRICE

Member: \$229
Program Participant: \$259

DISCOVERY STARTS HERE

Join us at Swanson Elementary this summer for STEAM Camp (Science, Technology, Engineering, Arts, and Mathematics). We will spend our days discovering, exploring, and hypothesizing while still taking time to do all things camp related like games, field trips, and more!



“ There are a whole lot of things in this world you haven't started wondering about yet. ”

ROALD DAHL James and the Giant Peach

STEAM CAMP WEEKLY THEMES

WEEK 1 | DIG IN

Get your hands dirty during the first week of camp as we start our community gardens! This week will be all about plants and how they grow.

WEEK 2 | RAINBOW ROAD

Travel across the color spectrum with us this week! We'll explore colors in all their glory - how we see them, how they are created, and what we can make with them!

WEEK 3 | CIRCUIT CIRCUS

It's an electrifying good time at STEAM Camp this week as we examine circuits! Campers will have the chance to create their own electrical circuits, as well as get their blood pumping in a circuit workout.

WEEK 4 | UNDERGROUND EXPLORERS

How did ancient civilizations cook dinner? What kind of animals roamed our soccer field? How do mummies stay intact for so long? Grab your archaeology tools and let's find out together!

WEEK 5 | SENSATIONAL SAFARI

From aardvarks to zebras, this week we will explore zoo animals! We'll create habitats, learn about camouflage, and discover our own imaginative species.

WEEK 6 | SUPER SENSES

Most of us use all five of our senses every day, but what would happen if we were missing one? This week, let's investigate our senses and see just how important they are.

WEEK 7 | SUSTAINABLE SUMMER

Reduce, Reuse, Recycle! This week is all about finding new ways to use old things. We can create so many things from recyclables, like biomes, igloos, and murals. The possibilities are endless!

WEEK 8 | MYSTICAL MESSES

Sometimes the best way to really understand something is to get your hands dirty...and we mean REALLY dirty! Slime, mud, shaving cream, you name it, we'll use it this week. Come dressed for a mess!

WEEK 9 | OUT OF THIS WORLD

Prepare for lift off! Take a trip through the solar system with us as we explore planets, stars, moons, and galaxies.

WEEK 10 | MAKE A SPLASH

Dive to the depths of the sea with us this week as we explore lakes, rivers, and oceans and the creatures that live within them. Be sure to bring a spare set of clothes because you WILL get wet!

NEW BERLIN ARTS CAMP

AGES 5-13



LOCATION

Poplar Creek Elementary
17401 W Cleveland Avenue
New Berlin, WI 53146



DETAILS

DATES

Weeks 7-10 (July 26 - August 20)

DAYS & TIMES

Monday - Friday
7:00 AM - 6:00 PM

FULL WEEK PRICE

Member: \$229
Program Participant: \$259

EXPLORE YOUR CREATIVITY

Arts Camp will empower, educate, and maximize the creative potential of emerging youth artists. Led by experienced counselors, we will create a stimulating atmosphere with lively activities, discussions, and insightful feedback. Our goal is to create innovative performances, events, and programs that inspire, entertain, and reflect our diverse community. All levels are welcome.

ART MEDIUMS

- 2D** Explore the art forms that are only two dimensional. This includes, drawing, painting, and photography. We will also learn about a crucial element of art: composition.
- 3D** Get hands-on and build new sculptures using clay, wood, found objects, and more.
- DANCE** Learn popular dance styles like jazz, tap, ballet, and hip hop.
- MUSIC** Explore your inner musical talents by learning how to use instruments, compose music, and sing.
- PRODUCTION** Take a dive into forms of art that are produced and broadcasted, including radio and TV.
- THEATRE** Learn forms of stage performances, like musicals and comedy, and broaden your mindset by learning Shakespearean.

“ We all can dance if we find the music that we love. ”

GILES ANDREAE Giraffes Can't Dance

ARTS CAMP WEEKLY THEMES

WEEK 7 | CHOREOGRAPHED CONSTRUCTION

Do you like to draw? Are you constantly building? Are you a dancing maniac? If so, let's kick-off camp by learning basic visual art forms and creating your own masterpieces!

2D 3D DANCE

WEEK 8 | STUDENT'S STUDIO

Do you sing, act, or just want to work with your hands? Come create new works of art while learning how hard work contributes to your passion projects.

3D MUSIC THEATRE

WEEK 9 | IMAGINATION EXPLORATION

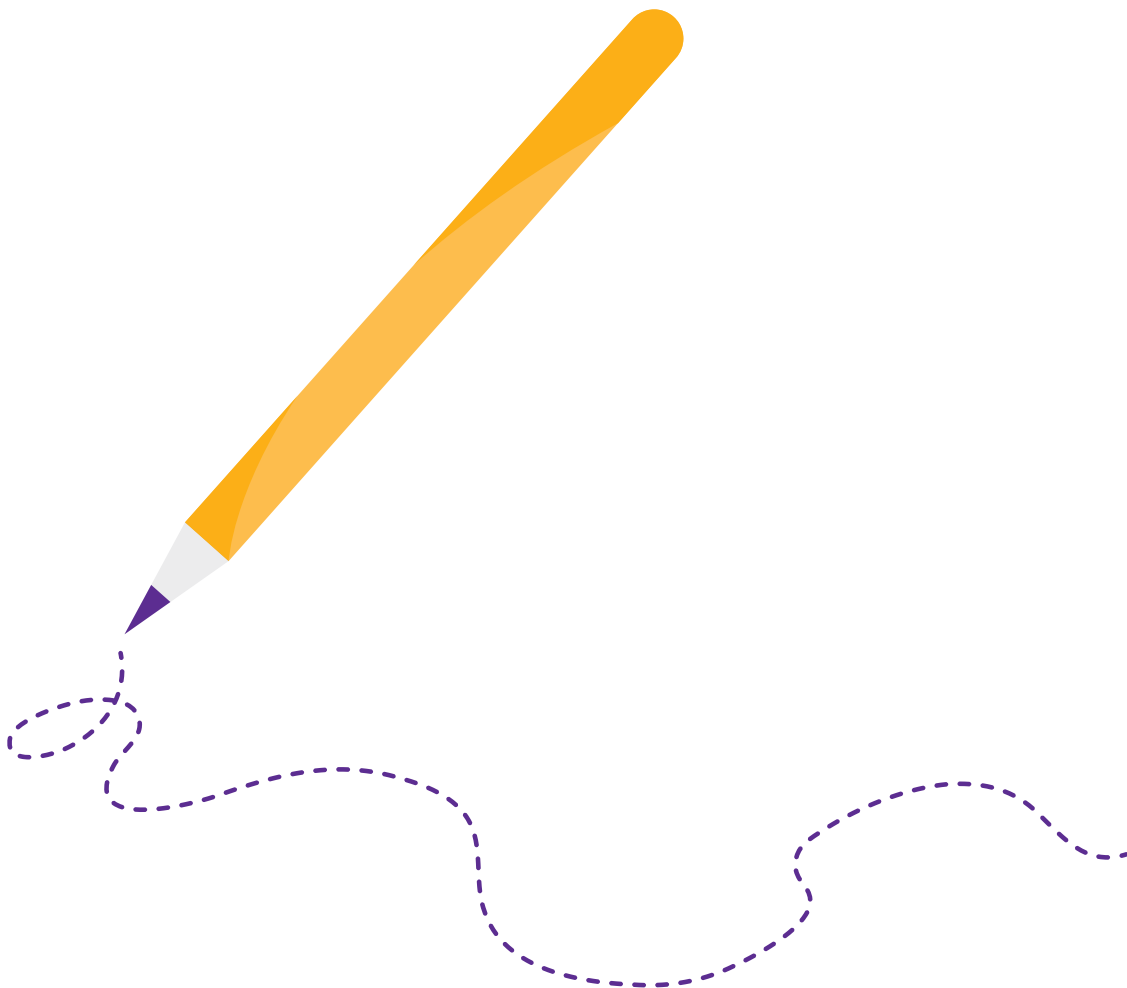
Let your imagination soar to new heights! We will use new experimental techniques and challenges to expand campers' artistic abilities.

2D 3D PRODUCTION

WEEK 10 | CAMP'S GOT TALENT

When you close your eyes do you see yourself in the spotlight? To wrap up Arts Camp, we'll showcase all that you've learned and created with dance, theater, and music!

DANCE MUSIC THEATRE



SCHOOL WRAP CAMPS

AGES 5-13



LOCATIONS

East Troy Community School District
Mukwonago Area School District
School District of Elmbrook
School District of New Berlin



DETAILS

DATES, TIMES & PRICE

Each Wrap Camp has specific dates, days, times, and pricing that align with school district offerings.

SUMMER UNPLUGGED

Looking for something fun for your children to do in the afternoons after summer school? Join us for Wrap Camp! We are excited to continue our partnerships with the East Troy Community School District, Mukwonago Area School District, School District of Elmbrook, and School District of New Berlin to offer half-day Summer School Wrap Camps.

Campers will spend most of their days outside playing games with friends, exploring nature, and discovering new skills and interests. Campers will have access to playgrounds, basketball hoops, open grass land for group games, and more!

TRANSPORTATION

The YMCA does not provide transportation to Wrap Camp. Please contact your child's school district for busing information.

“ I shall find out thousands and thousands of things! ”

FRANCES HODGSON BURNETT The Secret Garden



EAST TROY

LOCATION

Prairie View Elementary

DATES

Weeks 2-5 (June 21 - July 16)

DAYS & TIMES

Monday - Thursday

7:00-8:00 AM & 12:00-6:00 PM

4-DAY PRICE (AM)

Members & Program Participants: \$28

4-DAY PRICE (PM)

Members & Program Participants: \$108



MUKWONAGO

LOCATIONS

Big Bend Elementary

Prairie View Elementary

DATES

Weeks 2-5 (June 21 - July 16)

DAYS & TIMES

Monday - Thursday

12:00-6:00 PM

4-DAY PRICE

Members & Program Participants: \$108



ELMBROOK

LOCATION

Burleigh Elementary

DATES

Weeks 2-6 (June 21 - July 23)

DAYS & TIMES

Monday - Friday

12:00-6:00 PM

FULL WEEK PRICE

Member: \$138

Program Participant: \$160

3-DAY PRICE

Member: \$92

Program Participant: \$108



NEW BERLIN

LOCATION

Ronald Reagan Elementary

DATES

Weeks 2-6 (June 21 - July 23)

DAYS & TIMES

Monday - Thursday

11:30 AM - 6:00 PM

Fridays

7:00 AM - 6:00 PM

FULL WEEK PRICE

Member: \$138

Program Participant: \$160

4-DAY PRICE

Member: \$110

Program Participant: \$128

KINDER CAMP

AGES 3-5



LOCATIONS

Mukwonago YMCA
Southwest YMCA
Tri County YMCA
West Suburban YMCA



DETAILS

DATES

Session 1: June 22 - July 8
Session 2: July 13-29
Session 3: August 3-19

DAYS & TIMES

Tuesday & Thursday
9:00-11:30 AM

PRICE (per session)

Member: \$75
Program Participant: \$120

FUN FOR THE LITTLE ONES

Kinder Camp is a preschool readiness camp for those little ones eager to get a taste of camp, but not quite ready for the all day adventures. Each session uses themes and age-appropriate activities to help children develop academically, grow socially, master skills, make friends, and have fun. Camp days include special emphasis on a theme with activities, stories, crafts, and free play. All Kinder Campers must be potty-trained.



LOCATIONS

AGES 4-6
Mukwonago YMCA

AGES 4-13
Southwest YMCA
Tri County YMCA
West Suburban YMCA

AGES 5-13
Waukesha YMCA

AGES 7-13
Camp Double Eagle*

*Lessons held at the Mukwonago Y

SWIM LESSONS

AGES 4-13



DETAILS

DATES

Weeks 2-10 (June 21 - August 20)

DAYS & TIMES

Monday - Thursday

Camp Double Eagle	4:25-4:55 PM
Mukwonago Y	3:45-4:15 PM
Southwest Y	VARIABLES
Tri County Y	7:45-8:15 AM
Waukesha Y	3:55-4:25 PM
West Suburban Y	8:00-8:30 AM

PRICE (per week)

Member: \$22
Program Participant: \$44

SPLASH INTO SUMMER

Our convenient, 30-minute Summer Day Camp swim lessons are a great way to boost your child's confidence in the water. Lessons will take place before or after camp (during drop off or pick up times) or in the afternoon during camp open swim. Age groups and times vary by location.

Each week of swim lessons will have four, 30-minute swim lessons (one lesson each day, Monday-Thursday). Swimmers will be assessed at the start of each week and placed in a group appropriate for their age and skill level. You can purchase a week of swim lessons online or at the Business Desk.

MEMBERSHIP

Becoming a member at the Y is about more than just joining a fitness center. The Y is a community and in joining the Y, you're committing to more than just working out. You are supporting the values and programs that strengthen the community. At the Y, children learn what they can achieve, families spend quality time together, and we all build relationships that deepen our sense of belonging.

MEMBER BENEFITS

A membership is a great value. It gives you full access to all six YMCA of Greater Waukesha County locations, hundreds of programs, and reduced rates on swim lessons, youth sports, preschool classes, and Summer Day Camp. To receive the member rate for Summer Day Camp, a current membership must be in effect at the time of registration and for the duration of camper attendance.

MEMBERSHIP PLANS

MONTHLY MEMBERSHIP OPTION:

Monthly bank or credit card draft, with payment automatically deducted on the 10th of the month. June membership dues are collected at the time of camp registration. Membership will begin on June 1, 2021, with the first draft occurring on July 10, 2021.

HOUSEHOLD MEMBERSHIP	\$86/month
YOUTH MEMBERSHIP (Ages 8-17)	\$29/month

3 MONTH SHORT-TERM MEMBERSHIP:

Must be paid in full by cash, check, or charge at the time of camp registration. Membership begins June 1, 2021 and ends August 31, 2021.

HOUSEHOLD MEMBERSHIP	\$288
YOUTH MEMBERSHIP (Ages 8-17)	\$117

*Children under the age of 8 must be part of a Household Membership to receive the member rate for camp.

**Membership is nonrefundable, nontransferable, and not redeemable for cash.

ATTENDANCE & PRICING

The following attendance options are based on individual community needs and appropriate staffing for the local YMCA and are not interchangeable. Participants are welcome to attend the Summer Day Camp program that offers the attendance options that best fit their needs. If a camper attends fewer days than registered for, there will be no refund or credit. Camp Double Eagle and Specialty Camps are offered in full week (5-day) format only.

FULL WEEK OPTIONS

Children attend all 5 days during the chosen week and participate in all camp activities.

SUMMER DAY CAMP **AGE 4**
Mukwonago, Southwest, Tri County, West Suburban, Y Academy

Member: \$204 Program Participant: \$234

SUMMER DAY CAMP **AGES 5-13**
Mukwonago*, Southwest, Tri County, West Suburban, Waukesha, Y Academy*

Member: \$194 Program Participant: \$224

*Ages 5 & 6 only

CAMP DOUBLE EAGLE **AGES 7-13**
Camp Double Eagle

Member: \$204 Program Participant: \$234

SPECIALTY CAMP **AGES 7-13**
Southwest, Tri County, Waukesha, West Suburban

Member: \$229 Program Participant: \$259

ELMBROOK STEAM CAMP **AGES 5-13**
Swanson Elementary

Member: \$229 Program Participant: \$259

NEW BERLIN ARTS CAMP **AGES 5-13**
Poplar Creek Elementary

Member: \$229 Program Participant: \$259

3-DAY OPTION

Children attend 3 days during the week and participate in all camp activities on the chosen days. Days of the week must be selected at the time of registration. Not available for 4 year olds.

SUMMER DAY CAMP **AGES 5-13**
Mukwonago*, Southwest, Tri County, West Suburban, Waukesha, Y Academy*

Member: \$140 Program Participant: \$160

*Ages 5 & 6 only

SCHOOL WRAP CAMPS

Children attend wrap-around care before or after summer school. Check school district website for information about summer school days and times.

ELMBROOK WRAP CAMP **AGES 5-13**
Burleigh Elementary

3 DAYS

Member: \$92 Program Participant: \$108

5 DAYS

Member: \$138 Program Participant: \$160

NEW BERLIN WRAP CAMP **AGES 5-13**
Ronald Reagan Elementary

4 DAYS

Member: \$110 Program Participant: \$128

5 DAYS

Member: \$138 Program Participant: \$160

MUKWONAGO WRAP CAMP **AGES 5-13**
Big Bend Elementary, Prairie View Elementary

4 DAYS

Member & Program Participant: \$108

EAST TROY WRAP CAMP **AGES 5-13**
Prairie View Elementary

4 DAYS (AM)

Member & Program Participant: \$28

4 DAYS (PM)

Member & Program Participant: \$108

PAYMENT INFORMATION

POLICIES

DEPOSITS

A \$25 deposit is due for each week of camp at the time of registration. Deposits are nonrefundable, but may be transferred to another week of camp based on availability.

BALANCE PAYMENTS

Camp rates listed in the guide are per week. All payments are due by 12 PM on the dates listed below. All payments are to be made online, over the phone, or at one of the five full-service YMCA of Greater Waukesha County locations at the Business Desk. Payments will not be accepted at drop off or pick up. For your convenience, schedule weekly payments online or through the Camp Registrar. The YMCA will not distribute payment reminders or bills. It is your responsibility to pay the remaining balance on time. Camp payments are nonrefundable.

LATE FEES

Late payments will result in a \$10 late fee per child, per week. All payments **MUST** be made before attending camp.

CANCELLATIONS, REFUNDS, AND CREDITS

If a cancellation request is initiated by 12 PM on the Monday prior to the start of the camp week, a Y program credit will be issued minus the \$25 deposit. If a cancellation request is initiated fewer than seven days prior to the start of the camp week, no Y program credit will be issued. The entire deposit and balance paid is forfeited. If payment is not received prior to the cancellation deadline, you are still responsible for the full balance, regardless of whether or not your child attends camp. **Refunds will not be issued for any Summer Day Camp programs.**

CHANGES

To request a change in schedule or to cancel, please contact your Camp Registrar by 12 PM on the Monday prior to the start of camp and complete a camp change form. Changes may not be honored due to camp availability.

FINANCIAL ASSISTANCE

YMCA FINANCIAL ASSISTANCE

Individuals and families may apply for financial assistance for membership or programs, such as Summer Day Camp. Assistance is based upon a number of factors, including total household income and number of dependents. The process is confidential. Application forms and information about the program are available at each YMCA of Greater Waukesha County location or online at gwcymca.org.

WISCONSIN SHARES CHILD CARE ASSISTANCE

The YMCA of Greater Waukesha County offers many Summer Day Camps that are licensed by the Department of Children and Families and accept Wisconsin Shares Child Care Assistance.

Contact your Wisconsin Shares office for approval as you must have authorization before we can register your child for Summer Day Camp.

Milwaukee, Ozaukee, Waukesha Counties:

888-947-6583

Washington County:

262-335-4610

Location Numbers:

Big Bend	011	Southwest	012
Burleigh	016	Swanson	019
East Troy	027	Tri County	013
Mukwonago	006	Waukesha	004
Poplar Creek	024	West Suburban	014
Prairie View (MK)	010	Y Academy	008
Ronald Reagan	021		

YMCA of Greater Waukesha County Provider Number:

4000558914

PAYMENT CALENDAR

Final payment and registration due by 12 PM on the Monday prior to the start of the camp week

Week 1: June 14-18	Due June 7	Week 7: July 26-30	Due July 19
Week 2: June 21-25	Due June 14	Week 8: August 2-6	Due July 26
Week 3: June 28 - July 2	Due June 21	Week 9: August 9-13	Due August 2
Week 4: July 5-9	Due June 28	Week 10: August 16-20	Due August 9
Week 5: July 12-16	Due July 5	Week 11: August 23-27	Due August 16
Week 6: July 19-23	Due July 12		

REGISTRATION

HOW TO REGISTER

Register online or in person at one of our five full-service YMCA locations. Registration is not finalized until confirmation is received from the Camp Registrar.



REGISTRATION

Registration for all camps opens on February 1, 2021!

ONLINE

1. Go to gwcymca.org/Camp
2. If you have an online account with us, select the "Login to Register" button. If you do not have a login, click the "How to Create or Manage Your Account" button for additional instructions.
3. Once logged in, select your child, enter their information, select the weeks you need camp, answer the required questions, and add the camps to your cart.
4. Please note: You must complete the full registration at one time, and the online process allows you 45 minutes to complete registration. You must register for each week individually. **Be prepared to have your child's immunization records ready prior to starting registration.**
5. If you have additional children you wish to register for camp, select the next child and repeat the process.
6. A \$25 deposit is due for each week of camp (per child) at the time of registration.
7. The Camp Registrar will contact you once your registration has been finalized.

IN PERSON

Online registration is preferred. If you are unable to register online, please contact us directly.

REMINDERS

- Registration is limited and is based on availability; please register early.
- Deposits are nonrefundable, but may be transferred to another week of camp based on availability.
- Late payments will result in a \$10 late fee per child, per week. All payments must be made before a child can attend camp each week.
- Registration closes at 12 PM on the Monday prior to the start of the camp week. Please make note of each due date (listed on page 21) as this policy will be strictly enforced.

CAMP LOCATIONS

BIG BEND ELEMENTARY

W230 S8695 Big Bend Drive
Big Bend, WI 53103
262-363-7950

- mukwonogocamp@gwcymca.org
- mkregistrar@gwcymca.org

BURLEIGH ELEMENTARY

16185 Burleigh Place
Brookfield, WI 53005
414-302-9622

- elmbrookwrapcamp@gwcymca.org
- wsregistrar@gwcymca.org

CAMP DOUBLE EAGLE*

W365 S8661 Hwy 67
Eagle, WI 53119
262-363-7950

- doubleeagle@gwcymca.org
- mkregistrar@gwcymca.org

MUKWONAGO YMCA

245 E Wolf Run
Mukwonago, WI 53149
262-363-7950

- mukwonogocamp@gwcymca.org
- mkregistrar@gwcymca.org

POPLAR CREEK ELEMENTARY

17401 W Cleveland Avenue
New Berlin, WI 53146
414-546-9622

- southwestcamp@gwcymca.org
- swcampregistrar@gwcymca.org

PRAIRIE VIEW ELEMENTARY (MK)

W330 S6473 Hwy E
North Prairie, WI 53153
262-363-7950

- mukwonogocamp@gwcymca.org
- mkregistrar@gwcymca.org

PRAIRIE VIEW ELEMENTARY (ET)

2131 Townline Road
East Troy, WI 53120
262-363-7950

- mukwonogocamp@gwcymca.org
- mkregistrar@gwcymca.org

SOUTHWEST YMCA

11311 W Howard Avenue
Greenfield, WI 53228
414-546-9622

- southwestcamp@gwcymca.org
- swcampregistrar@gwcymca.org

SWANSON ELEMENTARY

305 N Calhoun Road
Brookfield, WI 53005
414-302-9622

- elmbrooksteamcamp@gwcymca.org
- wsregistrar@gwcymca.org

RONALD REAGAN ELEMENTARY

4225 S Calhoun Road
New Berlin, WI 53151
414-546-9622

- southwestcamp@gwcymca.org
- swcampregistrar@gwcymca.org

TRI COUNTY YMCA

N84 W17501 Menomonee Avenue
Menomonee Falls, WI 53051
262-255-9622

- tricountycamp@gwcymca.org
- tcregistrar@gwcymca.org

WAUKESHA YMCA

320 E Broadway
Waukesha, WI 53186
262-542-2557

- waukeshacamp@gwcymca.org
- wkregistrar@gwcymca.org

WEST SUBURBAN YMCA

2420 N 124th Street
Wauwatosa, WI 53228
414-302-9622

- westsuburbancamp@gwcymca.org
- wsregistrar@gwcymca.org

Y ACADEMY

100 E Broadway
Waukesha, WI 53186
262-522-4977

- yacademy@gwcymca.org
- wkregistrar@gwcymca.org

- General Questions & Information
- Registration & Payment Information

*Direct all Camp Double Eagle mail to the Mukwonago YMCA.



YMCA OF GREATER WAUKESHA COUNTY

3610 Michelle Witmer Memorial Dr, Ste 100
New Berlin, WI 53151
gwcymca.org

OPEN HOUSES

CAMP DOUBLE EAGLE

May 19, 6:00-8:00 PM

EAST TROY WRAP CAMP

Mukwonago YMCA
June 10, 6:00-7:00 PM

ELMBROOK WRAP CAMP

Burleigh Elementary
June 9, 6:00-7:00 PM

ELMBROOK STEAM CAMP

Swanson Elementary
June 2, 6:00-7:00 PM

MUKWONAGO WRAP CAMP

Mukwonago YMCA
June 10, 6:00-7:00 PM

MUKWONAGO YMCA

June 10, 6:00-7:00 PM

NEW BERLIN ARTS CAMP

Southwest YMCA
May 5, 6:00-7:00 PM

NEW BERLIN WRAP CAMP

Southwest YMCA
May 5, 6:00-7:00 PM

SOUTHWEST YMCA

May 5, 6:00-7:00 PM

TRI COUNTY YMCA

May 12, 6:00-7:30 PM

WAUKESHA YMCA

June 2, 6:00-7:30 PM

WEST SUBURBAN YMCA

May 27, 6:00-7:30 PM

Y ACADEMY

Call 262-522-4977 for a Tour

2021 SUMMER DAY CAMP SPONSOR

Wisconsin Vision

SEE. MORE. LIFE.