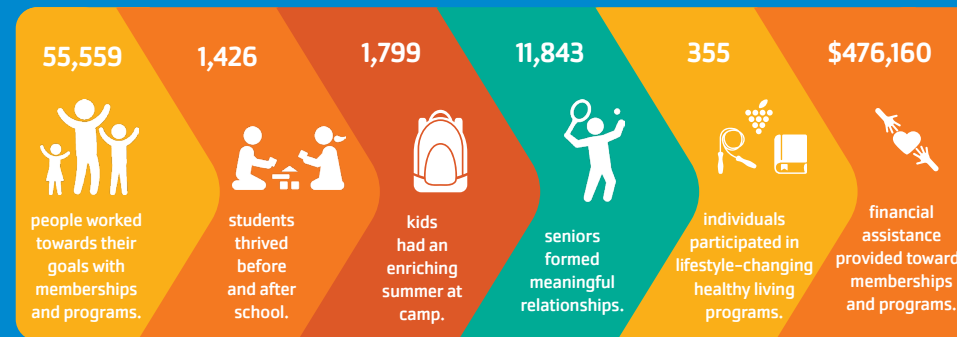




# OPENING DOORS TO OPPORTUNITY

As a non-profit organization, The YMCA of Greater Waukesha County is dedicated to serving and empowering our communities in Waukesha County and the surrounding areas by providing a wide range of programs and services aimed at fostering community engagement and resilience. Our primary areas of focus include promoting healthy living, youth development, and social responsibility.

## 2022 IMPACT



## YOUR GIFT'S IMPACT

- \$1,000** | Allows four children to attend a full week of Summer Day Camp.
- \$500** | Allows one cancer survivor to reclaim their health and well-being through LIVESTRONG® at the YMCA.
- \$250** | Allows ten children to complete Safety Around Water (SAW).
- \$100** | Helps a family with the cost of full-day child care for one child for a week at the YMCA Children's Academy.

**\$476,160**

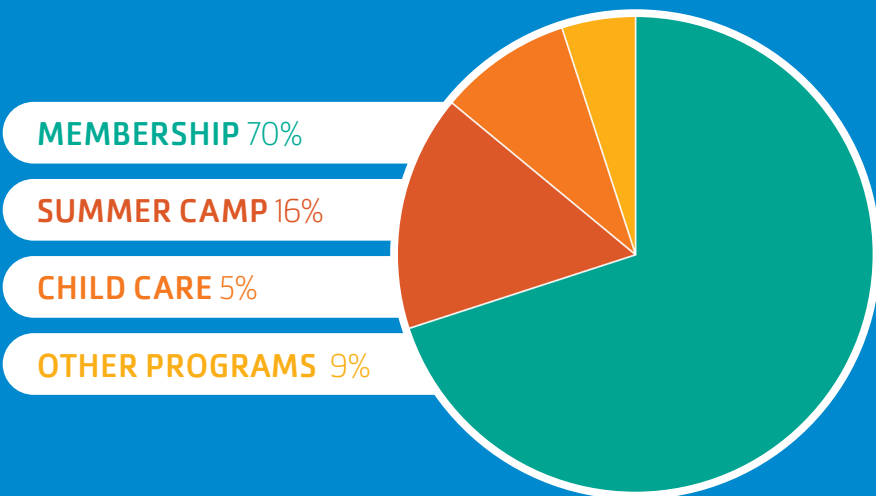
in financial assistance awarded



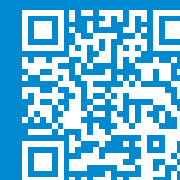
empowering **3,334** individuals and families to access life-changing programs.

100% of every donation goes directly towards providing financial assistance to those in need. The YMCA of Greater Waukesha County's generous donors play an indispensable role in making all this possible.

## FINANCIAL ASSISTANCE AWARDED



YMCA OF GREATER WAUKESHA COUNTY  
3610 Michelle Witmer Memorial Drive, New Berlin, WI 53151  
gwcymca.org | 262-330-5199



LEARN MORE  
GWCYMCA.ORG

# IGNITE IMPACT



YMCA OF GREATER WAUKESHA COUNTY  
**2022 IMPACT REPORT**



# YOUTH DEVELOPMENT

At the Y, we nurture character by fostering caring, honesty, respect, and responsibility in children through meaningful activities. Together, we forge a path toward lasting personal and social change by investing in the well-being of children.



**1,426 YOUTH** were inspired to learn, play, and grow in our **before and after school programs.**

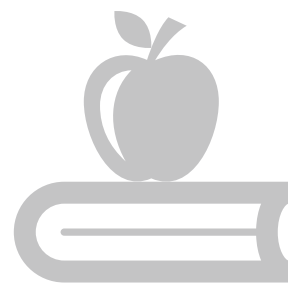


**1,799 CHILDREN** found a safe place to explore and build fundamental skills at **Summer Day Camp.**



**2,869 YOUTH** learned life-saving water safety skills in **swim lessons** and the **Safety Around Water (SAW) Program.**

**33 SCHOOLS** partnered with the Y to provide **child enrichment programs.**



At the Y, we proudly provide the **Y Children's Academy, Preschool, 4K & Extended Care, and Before & After School Care** designed to nurture children's holistic development.

# HEALTHY LIVING

Well-being and fitness extend beyond mere workouts. We offer educational programs that promote healthy lifestyles. Whether engaging in group exercise or supporting cancer survivors on their path to recovery, the Y is a welcoming community that embraces everyone to build a healthy spirit, mind, and body for all.



**57 INDIVIDUALS** reclaimed their health and well-being following a cancer diagnosis through the Y's **LIVESTRONG® at the YMCA** program.



The YMCA is fighting chronic disease on the front lines through evidence-based programs such as the **Diabetes Prevention Program (DPP), Blood Pressure Self-Monitoring Program, and Moving for Better Balance.**



**138 PARTICIPANTS** enjoyed learning tips and tricks for healthy eating during **cooking demonstrations** hosted by our nutrition experts.

# SOCIAL RESPONSIBILITY



The YMCA of Greater Waukesha County comprises people of all ages, from all walks of life, working side-by-side to strengthen communities. Together, we strive to ensure that everyone has the opportunity to reach their full potential with dignity.



## OUR MISSION

**TO PUT CHRISTIAN PRINCIPLES INTO PRACTICE THROUGH PROGRAMS THAT BUILD HEALTHY SPIRIT, MIND, AND BODY FOR ALL.**

## OUR VALUES

CARING

HONESTY

RESPECT

RESPONSIBILITY